



Institute of Genetic Medicine
The International Centre for Life, Central Parkway
Newcastle upon Tyne. NE1 3BZ

ncl.ac.uk

Project leader



Dr. Lyle Armstrong

StemBANCC WP03 lead

Phone +44 191 241
8695

Fax +44 191 241
8666

[E-Mail](#)



Prof. Maya Sieber-Blum

Phone +44 191 241
8695

Fax +44 191 241
8666

[E-Mail](#)

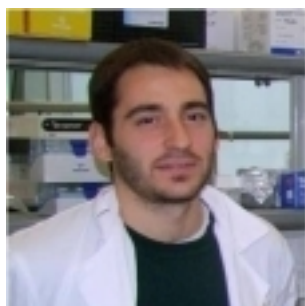
Project staff

Dr. Saba Habibollah



Phone +44 191 241
8616
Fax +44 191 241
8666

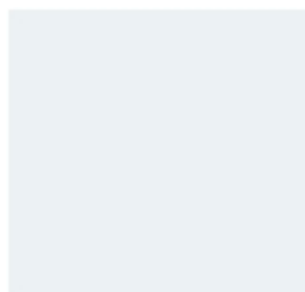
[E-Mail](#)



Dario Melguizo-Sanchez

Phone +44 191 241
8616
Fax +44 191 241
8666

[E-Mail](#)



Adriana Buskin

Student
Phone +44 191 241
8616
Fax +44 191 241
8666

[E-Mail](#)

Institute presentation

Thanks to a series of major infrastructural awards, from the Wellcome Trust, BBSRC and One NorthEast the stem cell labs are extremely well equipped for carrying out molecular genetics, cell biology and developmental biology research, including seven dedicated stem cell tissue culture laboratories, a stem cell microinjection facility, Sequenom automated genotyping, Roche GSFLX and Solexa high throughput DNA sequencing, Affymetrix microarray-based expression profiling and genotyping, laser microdissection microscopy, optical projection tomography, Zeiss confocal microscopy with Meta upgrade, and the 14 colour FACSAria fluorescence activated cell sorter with 18 colour sorting and analysing capacity, two accredited GMP facilities and a bioinformatics suite managed by a Senior Research Fellow in Bioinformatics. IHG hosts 10 other stem cell PIs involved in various aspects of stem cell differentiation ranging from cardiovascular to muscle, corneal, neuronal, neural crest, pancreatic and germ cell

differentiation who work very closely with the developmental biologists and clinicians in the IHG as well as other stem cell biologists located within other departments of Newcastle University. The Newcastle-upon-Tyne Hospitals NHS Trust has demonstrated its exemplary performance in the 2006 NHS ratings, receiving the maximum possible 3* rating, and has been appointed as a Foundation Trust. In the latest RAE, the great majority of the IHG's research staff were rated as world-class, being scored either as 4* (world-leading) or 3* (internationally excellent).