



Neuroscience Discovery

67061 Ludwigshafen

Knollstrasse

Germany

abbvie.com

Project leader



**Prof. Georg C.
Terstappen**

Phone: +49 621 589
3245

Fax: +49 621 589
3232

[E-Mail](#)

Project staff



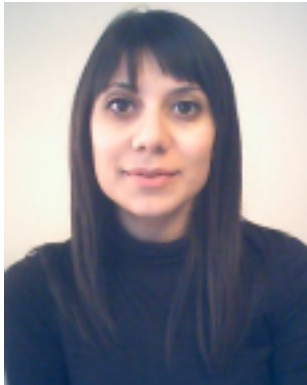
Dr. Viktor Lakics

Work package: EFPIA Co-
Leader WP8

Phone: +49 621 589
2245

Fax: +49 621 589
3232

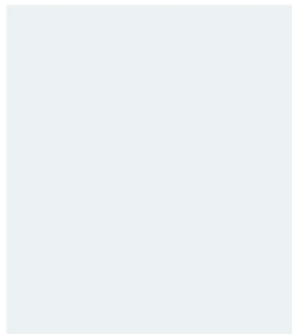
[E-Mail](#)



Roberta de Filippis

Phone: +49 621 589
2705
Fax: +49 621 589
3232

[E-Mail](#)



Dr. Margot H.M. Bakker

Work package: WP2 and
WP11

Phone: +49 621 589
3191
Fax: +49 621 589
3232

[E-Mail](#)



Dr. Eric Blomme

Work package: WP08 -
CNS
Lab Leader, Neuroscience
Discovery

Phone: +1 847 937
2269
Fax: +49 621 589
3232

[E-Mail](#)

Institute presentation

AbbVie is a global, research-based biopharmaceutical company focused on developing advanced therapies that address some of the world's most serious diseases. Our goal is to improve patients' health and quality of life – with innovative specialty medicines, focused research and groundbreaking initiatives for patients.

To make an impact on people's lives, we draw on our deep expertise in some of the most difficult-to-treat diseases and on our understanding of the patient journey to identify opportunities to create better outcomes at every stage.

Approximately 2400 AbbVie employees in Germany work to achieve that goal. We are represented here at our head office in Wiesbaden and at our research and manufacturing site in Ludwigshafen.

With our specialty drugs and biologics, we are a leader in many of the therapeutic areas in which we are involved. In Germany, these include rheumatic disease, psoriasis, chronic inflammatory bowel disease, HIV/AIDS, RSV infection in preterm babies, Parkinson's disease, kidney disease and anaesthesiology.

Our discovery and development efforts are focused on a core set of therapeutic areas where we have proven expertise and where we believe we can have an even greater impact on the disease and how it is managed. These core areas of focus include hepatitis C (HCV), neuroscience, immunology, oncology, renal disease, and women's health.

In the area of neuroscience, we are conducting innovative research on compounds that target receptors in the brain, which help regulate pain, mood, memory and other neurological functions. We have a number of early and advanced investigational compounds in human studies for conditions such as schizophrenia, chronic pain, Alzheimer's disease, Parkinson's disease, and multiple sclerosis (MS) - all of which affect millions of people worldwide.

Partnerships play a key role for us. We know how important collaborative R&D agreements and partnerships are to speed up medical breakthroughs. To find potential new therapies for patients we look both inside and outside AbbVie to help uncover promising discoveries. We partner and collaborate with peer companies, universities, non-governmental organizations, and others to help find solutions for patients around the globe. At AbbVie, we understand there are times when we can accomplish more together than alone.

For more information visit abbvie.com